

# Joint Total Asset Visibility

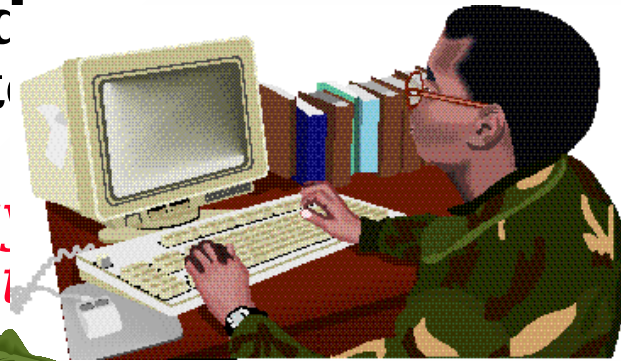
## **JTAV Training Briefing**





# JTAV Defined

**JTAV** is the *Capability* to Provide Users with Timely and Accurate Information on the *Location, Movement, Status, and Identity of Units, Personnel, Equipment, and Supplies*. It *Facilitates* the Capability to *Act Upon* Information to Improve Overall Performance of DoD's Logistics Practices.

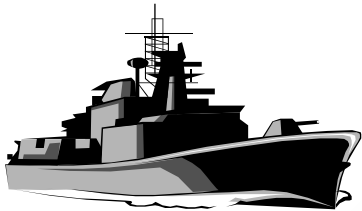
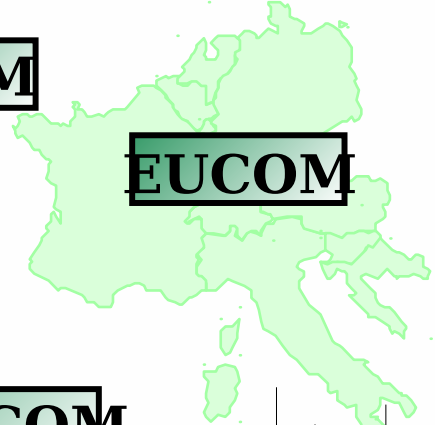
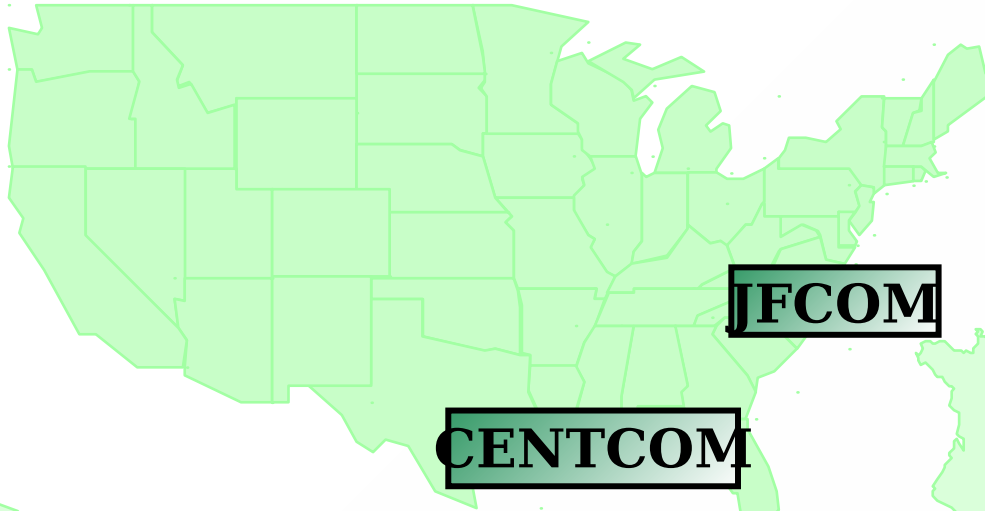
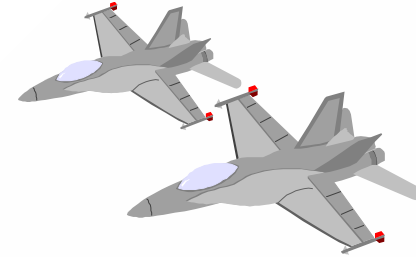


Ref: Joint Total Asset Visibility Strategic Plan





# JTAV In-Theater Locations

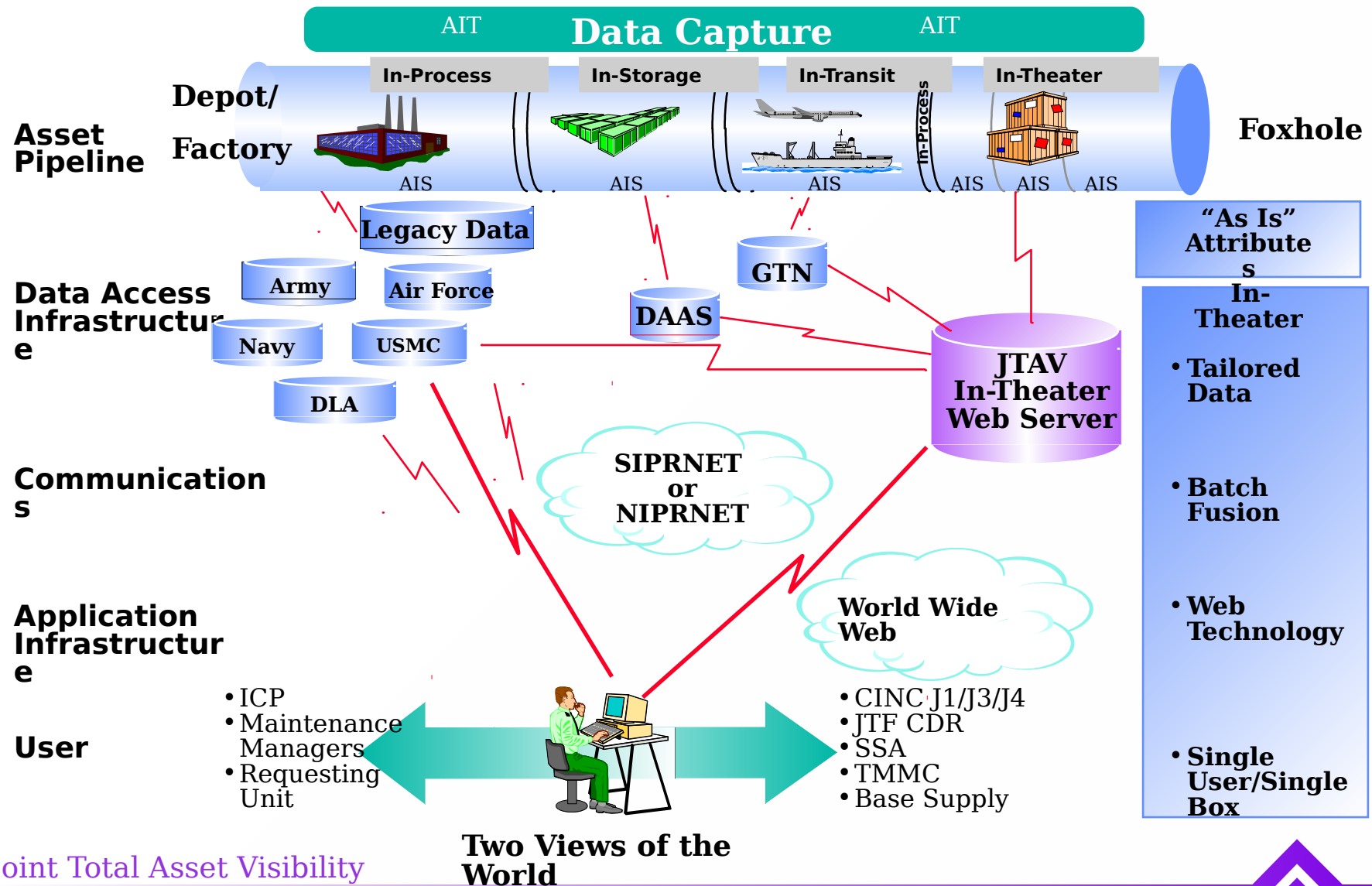


Joint Total Asset Visibility





# The JTAV "As Is" System Architecture





# JTAV In-Theater Today

**ARMY**  
**ATAV** - Daily  
 Unit Equipment  
 War Reserve, Retail &  
 Wholesale Supply  
**WARS** - Weekly  
 Munitions

**NAVY**  
**U2** - Shorebased Supply  
**FIMARS** -Bi-weekly  
 Shipboard Supply  
**CASEMIS** -Quarterly  
 Seabees EOD Unit Equipment  
**CAIMS** - Daily  
 Munitions (High side only)

**USMC**  
**ATLASS/SASSY** - Daily  
 Supply and Unit Equipment  
**MAARS-II** - Daily  
 Munitions  
**MCSCS** - Daily  
 Wholesale Supply

**AIR FORCE**  
**SBSS** -Daily  
 Retail Supply  
**AFEMS** - Quarterly  
 Unit Equip  
**CAS-A** - Weekly  
 Munitions

IMRL (Navy)

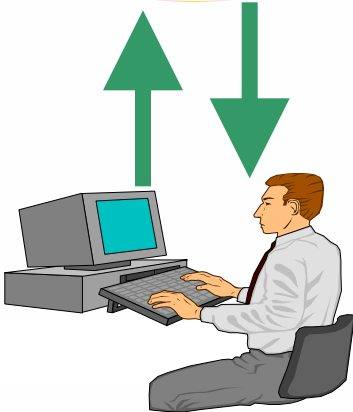
AIT/  
SMART  
CARD

Pending  
Additional  
Feeds

Current  
Feeds

JTAV  
In-Theater

Current  
Feeds



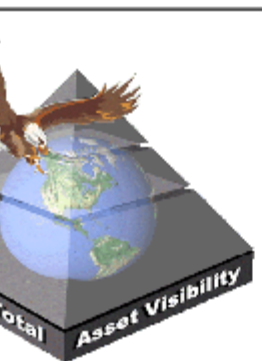
**DLA**  
**DAAS LIPS (LOTS)**  
 Req. Status - Hourly  
**SAMMS** - Daily  
 Wholesale Stocks  
**AMS** Multi -Daily  
 Container Contents  
**DFAMS** - Daily  
 Bulk Fuel  
**DODAAF**  
 DODAAC data  
**FEDLOG**  
 Supply Catalog data  
**DRMS**  
 Excess Property

**GTN**  
 Air Trans - Quarter hour  
 Surface Trans - Hourly

**Worldwide RFITV**  
 RF Tags Multi -Daily  
 Contents/Location

**DTRACS**  
 Satellite Tracking - Daily  
 Convoy Location  
 EUROPE ONLY

**JMAR**  
 Joint Medical Asset  
 Repository - Daily



# JTAV

## Joint Total Asset Visibility

Your last logout/login was 2 days 22 hours 56 minutes ago from 137.246.104.100

You are communicating with

- Resources**
- [e Notes\(1.0.0.9\\_p16\)](#)
  - [ord Change](#)
  - [ss Change](#)
  - [ase Schema Browser](#)
  - [ents Review](#)
  - [Editor](#)
  - [uide](#)
  - [of Contact](#)
  - [eeds](#)
  - [mercial Carrier Web](#)
  - [ed Web Sites](#)
  - [COM JTAV News](#)

### You may initiate a query from one of these Functional Areas:

- |   |                                    |                           |
|---|------------------------------------|---------------------------|
| <a href="#">Inventory</a>               | <a href="#">Requisition Status</a> | <a href="#">Munitions</a> |
| <a href="#">Transportation</a>          | <a href="#">War Reserves</a>       | <a href="#">Medical</a>   |
| <a href="#">Ground (DTRACS)</a>         | <a href="#">Unit Equipment</a>     | <a href="#">Utility</a>   |
| <a href="#">RF Tag ID (ITV)</a>         | <a href="#">Bulk Fuel</a>          | <a href="#">Reports</a>   |
| <a href="#">ENHANCED TRANSPORTATION</a> | Batch Query Status: None           |                           |

You may also initiate a query from the [List of Entry Arguments](#).

### CENTCOM Quick Queries

1. Surface Shipment to Pakistani Ports ([RPTS\\_022](#))
2. Surface Sustainment COCOM Container Report ([RPTS\\_023](#))

## DLA DSS MRO Tracking System

KEITTRM's Top Queries

Train1: [Logout](#)

UNCLASSIFIED

[Comments](#)

[Help](#)

1



# JTAV

*Joint Total Asset Visibility*

Your last logout/login was 24 minutes ago from 199.211.150.33

## Resources

1. [Release Notes](#)  
(1.0.0.9\_p10)
2. [Password Change](#)
3. [Address Change](#)
4. [Database Schema Browser](#)
5. [Comments Review](#)
6. [Hotlist Editor](#)
7. [User Guide](#)
8. [Data Feeds](#)
9. [Commercial Carrier Web Sites](#)
10. [Related Web Sites](#)



## Resources

- **Password Change**
- **Address Change**
- **Comments Review**
- **Hotlist Editor**
- **User Guide**
- **Commercial Carrier Web Sites (DHL, FEDEX, etc)**

Training

Personal Areas:

1. [Inventory](#) (INVEN002)

2. [Requisition Doc Status](#) (REQN\_001)

3. [Transportation](#) (TRAN)

4. [Feedback](#) (ET-)



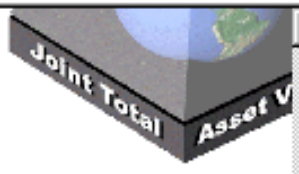
Train1: [Logout](#)

**UNCLASSIFIED**

[Comments](#)

[Help](#)

1



# JTAV

## Joint Total Asset Visibility

Your last logout/login was 24 minutes ago from 199.211.150.33

You are communicating with

You may initiate a query from one of these Functional Areas:

- |                                    |  |                                   |
|------------------------------------|--|-----------------------------------|
| <a href="#">Inventory</a>          | <a href="#">War Reserves</a>                 | <a href="#">Maintenance (TBD)</a> |
| <a href="#">Transportation</a>     | <a href="#">Unit Equipment</a>               | <a href="#">Medical</a>           |
| <a href="#">Ground (DTRACS)</a>    | <a href="#">Bulk Fuel</a>                    | <a href="#">Utility</a>           |
| <a href="#">RF Tag ID (ITV)</a>    | <a href="#">Munitions</a>                    | <a href="#">Reports</a>           |
| <a href="#">Requisition Status</a> | Batch Query Status: <a href="#">ENHANCED</a> | <a href="#">TRANSPORTATION</a>    |
|                                    | None   |                                   |

You may also initiate a query from the [List of Entry Arguments](#).

- Resources**
- [Release Notes](#)  
(1.0.0.9\_p10)
  - [Password Change](#)
  - [Address Change](#)
  - [Database Schema Browser](#)
  - [Comments Review](#)
  - [Hotlist Editor](#)
  - [User Guide](#)
  - [Data Feeds](#)
  - [Commercial Carrier Web Sites](#)
  - [Related Web Sites](#)

**Inventory  
(Wholesale and**



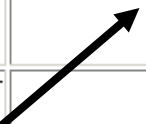


## Inventory Queries

(Use [Ad Hoc Queries](#) if no predefined query fits your needs)

Argument	Sch/Rdy	Queries	These queries provide:	Details
FSC		<a href="#">INVEN005</a>	Inventory status by Federal Supply Class (FSC).	<a href="#">Show</a>
NSN		<a href="#">INVEN004</a>	An inventory status by Service/Agency, storage location, and condition code for NSNs or NIINs.	<a href="#">Show</a>
NSN/LSN/NDC/PN		<a href="#">INVEN001</a>	A rollup of inventory status by Service/Agency and condition code for a specific National Stock Number (NSN), National Item Identification Code (NIIN), Local Stock Number (LSN), National Drug Code (NDC) or Part Number (PN).	<a href="#">Show</a>
		<a href="#">INVEN002</a>	An inventory status by Service/Agency, storage location, and condition code for NSN, NIIN, LSN, NDC or PN.	<a href="#">Show</a>
NSN/LSN/NDC/PN & DODAAC		<a href="#">INVEN003</a>	Retail inventory status by condition code for a specific DODAAC.	<a href="#">Show</a>
Nomenclature		<a href="#">INVEN007</a>	Inventory management data and status for a specific nomenclature; used when specific stock number is not available.	<a href="#">Show</a>

**NSN  
Query**



Train25: [Logout](#)[Main Page](#)

UNCLASSIFIED

[Comments](#)[Help](#)

7.INVEN002

## Query INVEN002 Entry Argument Form

[An inventory status by Service/Agency, storage location, and condition code for NSN, NIIN, LSN, NDC or PN.](#)

*This query has batch result waiting for you to [view](#).*

*You have already [scheduled](#) this query.*

1. Select Services/Agency:  Army  Marine Corps  Navy  Air Force  Coast Guard  DLA

2. Enter one or more NSN/LSN/NDC/PN arguments, or select from the list on the far right:

4720011560549

4720011560549

3. Choose when to start the query:

Start Now

Start Now ( Background )

Clear Form

Start Delayed

Until December / 18 at 11 : 01

Interval  Hours        Day(s) 1  Week(s)      

Start December / 18 at 11 : 01

End December / 18 at 11 : 01

[Query INVEN002](#) Rows  to  of 38 >  ?

<a href="#">Svc</a>	<a href="#">Data Source</a>	<a href="#">NSN, LSN, NDC or PN</a>	<a href="#">Nomenclature</a>	<a href="#">UI</a>	<a href="#">Qty On Hand</a>	<a href="#">Qty Due In</a>	<a href="#">Qty Due Out</a>	<a href="#">Shelf Life</a>	<a href="#">Lot Number</a>	<a href="#">Pack Date</a>	<a href="#">Expiration Date</a>
---------------------	-----------------------------	-------------------------------------	------------------------------	--------------------	-----------------------------	----------------------------	-----------------------------	----------------------------	----------------------------	---------------------------	---------------------------------

<b>Query INVEN002 [2002/03/07 23:58 Z]</b>											
<b>Source:</b>		ATAV, DISMS, DRMS, FIMARS, JMAR, MCSCS, SAMMS, SASSY, SBSS, SCCR, USAF and UADPS II.									
<b>Services:</b>		Army - Air Force - Marine Corps - Navy - DLA - Coast Guard -									
<b>NSN/LSN/NDC/PN:</b>		4720011560549									
<b>Rows:</b>		1 through 38 out of 38									

<a href="#">Svc</a>	<a href="#">Data Source</a>	<a href="#">NSN, LSN, NDC or PN</a>	<a href="#">Nomenclature</a>	<a href="#">UI</a>	<a href="#">Qty On Hand</a>	<a href="#">Qty Due In</a>	<a href="#">Qty Due Out</a>	<a href="#">Shelf Life</a>	<a href="#">Lot Number</a>	<a href="#">Pack Date</a>	<a href="#">Expiration Date</a>
<a href="#">DLA</a>	<a href="#">SAMMS</a>	<a href="#">4720011560549</a>	<a href="#">HOSE, NONMETALLIC</a>	<a href="#">FT</a>	282						
<a href="#">DLA</a>	<a href="#">SAMMS</a>	<a href="#">4720011560549</a>	<a href="#">HOSE, NONMETALLIC</a>	<a href="#">FT</a>	462						
					744						
****											
sum					744						
<a href="#">USA</a>	<a href="#">ATAV-NG</a>	<a href="#">4720011560549</a>	<a href="#">HOSE, NONMETALLIC</a>	<a href="#">FT</a>		25	25				
<a href="#">USA</a>	<a href="#">ATAV-NG</a>	<a href="#">4720011560549</a>	<a href="#">HOSE, NONMETALLIC</a>	<a href="#">FT</a>		1	1				
<a href="#">USA</a>	<a href="#">ATAV-NG</a>	<a href="#">4720011560549</a>	<a href="#">HOSE, NONMETALLIC</a>	<a href="#">FT</a>		15	15				

File Edit View Favorites Tools Help

Back Forward Stop Refresh Home Search Favorites History Mail Print Edit

Address [https://excalibur.hq.pacom.mil/c4i/JTAVWB\\_10.frames?usr=Cbsperki&q=INVEN002&querytable=/queries/q.INVEN002&f=1.a&m0=38&m1=1&m2=200&nr=38&loop=custom](https://excalibur.hq.pacom.mil/c4i/JTAVWB_10.frames?usr=Cbsperki&q=INVEN002&querytable=/queries/q.INVEN002&f=1.a&m0=38&m1=1&m2=200&nr=38&loop=custom)

Links JTAV ... RTN Home RF ITV AEPS Entry Point USAREUR ITV HOME PAGE

Drill down and sideway - Microsoft Internet Explorer provided by ...

File Edit View Favorites Tools Help

Back Forward Stop Refresh Home Search Favorites

[add AQ5 to hot list]

Routing Identifier Code  
AQ5

Close

RIC	OR Name	OR Address
AQ5	XU DISTRIBUTION DEPOT SAN JOAQUIN	TRANS OFC PO BOX 960001, STOCKTON CA 95296-0130,

Qty On Hand	Qty Due In	Qty Due Stor Out	RIC	DODAAC	Unit Name and Address
282			AQ5		XU DISTRIBUTION DEPOT
462			SNC		DEF DIST DEPOT SUSQUE
744					
744					
25	1	15	A19	W11M94	SREUSPFO WHS ACTV CT
			A36	W23R7E	XRAUSPFO FOR MARYLAND
			A54	W24L9M	SREW7NU USPFO ACTIVIT

**DL  
A**

Query INVEN002 Rows 1 to 38 of 38 Save Data Customize

**Army**

Svc	Data Source	NSN, LSN, HDC or PN	Nomenclature	UI	Qty On Hand	Qty Due In	Qty Due Out	Stor RIC	DODAAC	Unit Name and Address
USA	ATAV-NG	4720011560549	HOSE, NONMETALLIC	FT		25	25	A19	U11M94	SREUSPFO WHS ACTV CT ARNG ST
USA	ATAV-NG	4720011560549	HOSE, NONMETALLIC	FT		1	1	A36	U23R7B	XRAUSPFO FOR MARYLAND
USA	ATAV-NG	4720011560549	HOSE, NONMETALLIC	FT		15	15	A54	U24L9M	SREW7NU USPFO ACTIVITY OH AI
USA	ATAV	4720011560549	HOSE, NONMETALLIC	FT	41			WF2	U34TVH	SR 801 CS BN B CO LT MAINT :
USA	ATAV	4720011560549	HOSE, NONMETALLIC	FT	122			WGT	U4546F	SR C CO 27 MAIN SPT BN SARS:
USA	ATAV-RES	4720011560549	HOSE, NONMETALLIC	FT		3	3	W40	U55XGJ	SR ARCENT TRNG SCTY KU DSU :
USA	ATAV-RES	4720011560549	HOSE, NONMETALLIC	FT		2	2	WMG	U806BY	SR 238 CS CO MAINT CO GS SAI
USA	ATAV-NG	4720011560549	HOSE, NONMETALLIC	FT		50	50	WDA	U808GP	SRV540 CS BN CO C LT MA
USA	ATAV-NG	4720011560549	HOSE, NONMETALLIC	FT		10	10	WCW	U80HGJ	SRVHHC 42ND CS SPT CMD SRA
USA	ATAV	4720011560549	HOSE, NONMETALLIC	FT		9	9	W66	U80KG6	XR CO F 58TH AVN ASL
USA	ATAV-NG	4720011560549	HOSE, NONMETALLIC	FT		75	75	A39	U80X7I	SREUSPFO FOR MI SRA
USA	ATAV-NG	4720011560549	HOSE, NONMETALLIC	FT		10	10	WLF	U81DP2	SRE278 CS SQ TRP B MAIN
USA	ATAV-NG	4720011560549	HOSE, NONMETALLIC	FT		25	25	A21	U81J8X	SREUSPFO FOR DE STOCK RECOR
USA	ATAV-NG	4720011560549	HOSE, NONMETALLIC	FT		12	12	A62	U81JND	SREUSPFO FOR TN SRA
USA	ATAV-NG	4720011560549	HOSE, NONMETALLIC	FT		30	30	A31	U81K4M	SREUSPFO FOR KS SARSS 1
USA	ATAV	4720011560549	HOSE, NONMETALLIC	FT	239			WXH	U90AOD	SR W3VA CO B FSB SARSS 1
USA	ATAV	4720011560549	HOSE, NONMETALLIC	FT	17			WQR	U84BM9	SR 123 CS BN CO D
USA	ATAV	4720011560549	HOSE, NONMETALLIC	FT	20			ACN	U84F81	SR 596 CS CO MAINT SSA
USA	ATAV	4720011560549	HOSE, NONMETALLIC	FT		31	31	AER	U84FV9	SR W4EC SUPPLY SUPPORT DIV :
USA	ATAV	4720011560549	HOSE, NONMETALLIC	FT		25	25	WQW	U84GE4	SR 701 CS BN CO D
USA	ATAV	4720011560549	HOSE, NONMETALLIC	FT	11			WQ3	U84GEY	SR W1KN FSB SUP CO FWD
USA	ATAV	4720011560549	HOSE, NONMETALLIC	FT	4			AC1		SR WOC3 USA MAT SPT CEN KOR
USA	ATAV	4720011560549	HOSE, NONMETALLIC	FT		1	1	AW1		CONSOLIDATED PROPERTY ACCOU
USA	ATAV	4720011560549	HOSE, NONMETALLIC	FT		10	10	AXB		SR WOUX CONSOL SUPPLY ACT D
USA	ATAV	4720011560549	HOSE, NONMETALLIC	FT		50	50	ACU		HEADQUARTERS XVIII AIRBORNE
USA	ATAV	4720011560549	HOSE, NONMETALLIC	FT				ACB		SR W40Y SPT DEP ACCT ARCA

Back Forward Stop Refresh Home Search Favorites History Mail Print Edit

Address [https://excalibur.hq.pacom.mil/c4i/JTAVWB\\_10.frames?usr=Cbsperki&q=INVEN002&querytable=/queries/q.INVEN002&f=1.a&m0=38&m1=1&m2=200&n=38&loop=custom](https://excalibur.hq.pacom.mil/c4i/JTAVWB_10.frames?usr=Cbsperki&q=INVEN002&querytable=/queries/q.INVEN002&f=1.a&m0=38&m1=1&m2=200&n=38&loop=custom)

Links [JTAV-Excalibur](#) [JTAV-Tripoli](#) [DBDD-Excalibur](#) [DBDD-Tripoli](#) [DBDD-DS9](#) [GTN Home](#) [RF ITV](#) [AEPS Entry Point](#) [USAREUR ITV HOME PAGE](#)

Cbsperki: [Logout](#)      [MainQuery Page](#)      UNCLASSIFIED      [Comments](#)      [Help](#)      10.INVEN002

[Query INVEN002](#)

[Data](#)      [NSN, LSN,](#)  
[Svc](#)      [Source](#)      [HDC or PN](#)

<a href="#">USA</a>	<a href="#">ATAV-RES</a>	<a href="#">4720011560549</a>
<a href="#">USA</a>	<a href="#">ATAV-NG</a>	<a href="#">4720011560549</a>
<a href="#">USA</a>	<a href="#">ATAV-NG</a>	<a href="#">4720011560549</a>
<a href="#">USA</a>	<a href="#">ATAV</a>	<a href="#">4720011560549</a>
<a href="#">USA</a>	<a href="#">ATAV-NG</a>	<a href="#">4720011560549</a>
<a href="#">USA</a>	<a href="#">ATAV-NG</a>	<a href="#">4720011560549</a>
<a href="#">USA</a>	<a href="#">ATAV-NG</a>	<a href="#">4720011560549</a>
<a href="#">USA</a>	<a href="#">ATAV-NG</a>	<a href="#">4720011560549</a>
<a href="#">USA</a>	<a href="#">ATAV</a>	<a href="#">4720011560549</a>
<a href="#">USA</a>	<a href="#">ATAV</a>	<a href="#">4720011560549</a>
<a href="#">USA</a>	<a href="#">ATAV</a>	<a href="#">4720011560549</a>
<a href="#">USA</a>	<a href="#">ATAV</a>	<a href="#">4720011560549</a>
<a href="#">USA</a>	<a href="#">ATAV</a>	<a href="#">4720011560549</a>
<a href="#">USA</a>	<a href="#">ATAV</a>	<a href="#">4720011560549</a>
<a href="#">USA</a>	<a href="#">ATAV</a>	<a href="#">4720011560549</a>
<a href="#">USA</a>	<a href="#">ATAV</a>	<a href="#">4720011560549</a>
<a href="#">USA</a>	<a href="#">ATAV</a>	<a href="#">4720011560549</a>
<a href="#">USA</a>	<a href="#">ATAV</a>	<a href="#">4720011560549</a>
<a href="#">USA</a>	<a href="#">ATAV</a>	<a href="#">4720011560549</a>
<a href="#">USA</a>	<a href="#">ATAV</a>	<a href="#">4720011560549</a>
<a href="#">USA</a>	<a href="#">ATAV</a>	<a href="#">4720011560549</a>

**Drill down and sideways - Microsoft Internet Explorer provided by ...**

File Edit View Favorites Tools Help

Back Forward Stop Refresh Home Search Favorites

**Unit Name and Address**  
**SR WOC3 USA MAT SPT CEN**  
**KOREA GENERAL SUPPORT**  
**DIST BR SARSS 1, UNIT 15384,**  
**APO AP 96271-0716**

[add SR WOC3 USA MAT SPT CEN  
KOREA GENERAL SUPPORT DIST  
BR SARSS 1, UNIT 15384, APO AP  
96271-0716 to hot list](#)

<a href="#">HOSE, NONMETALLIC</a>	<a href="#">FT</a>		4			<a href="#">AC1</a>
<a href="#">HOSE, NONMETALLIC</a>	<a href="#">FT</a>				1	<a href="#">AW1</a>
<a href="#">HOSE, NONMETALLIC</a>	<a href="#">FT</a>				10	<a href="#">AXB</a>
<a href="#">HOSE, NONMETALLIC</a>	<a href="#">FT</a>				50	<a href="#">AGU</a>
<a href="#">HOSE, NONMETALLIC</a>	<a href="#">FT</a>					<a href="#">A7Y</a>
<a href="#">HOSE, NONMETALLIC</a>	<a href="#">FT</a>					<a href="#">WET</a>
<a href="#">HOSE, NONMETALLIC</a>	<a href="#">FT</a>					<a href="#">WQF</a>
		-----		-----		
				454	384	384

[DODAAC Unit Name and Address](#)

<a href="#">W806BY</a>	<a href="#">SR 238 CS CO MAINT CO GS SA</a>
<a href="#">W808GP</a>	<a href="#">SRV540 CS BN CO C LT MA</a>
<a href="#">W80HGJ</a>	<a href="#">SRVHHC 42ND CS SPT CMD SRA</a>
<a href="#">W80KGG</a>	<a href="#">XR CO F 58TH AVN ASL</a>
<a href="#">W80X71</a>	<a href="#">SREUSPFO FOR MI SRA</a>
<a href="#">W80ADP2</a>	<a href="#">SRE278 CS SQ TRP B MAIN</a>
<a href="#">W818XX</a>	<a href="#">SREUSPFO FOR DE STOCK RECORI</a>
<a href="#">W81JND</a>	<a href="#">SREUSPFO FOR TN SRA</a>
<a href="#">W81K4M</a>	<a href="#">SREUSPFO FOR KS SARSS 1</a>
<a href="#">W90A0D</a>	<a href="#">SR WAVA CO B FSB SARSS 1</a>
<a href="#">W8K4BM9</a>	<a href="#">SR 123 CS BN CO D</a>
<a href="#">W8K4F81</a>	<a href="#">SR 596 CS CO MAINT SSA</a>
<a href="#">W8K4FV9</a>	<a href="#">SR W4EC SUPPLY SUPPORT DIV :</a>
<a href="#">W8K4GE4</a>	<a href="#">SR 701 CS BN CO D</a>
<a href="#">W8K4GEY</a>	<a href="#">SR WIKN FSB SUP CO FWD</a>
<a href="#">SR WOC3 USA MAT SPT CEN KOR</a>	
<a href="#">CONSOLIDATED PROPERTY ACCOU</a>	
<a href="#">SR WOUX CONSOL SUPPLY ACT D:</a>	
<a href="#">HEADQUARTERS XVIII AIRBORNE</a>	
<a href="#">SU W4QV STK REC ACCT APGSA :</a>	
<a href="#">SR USA MAT SPT CTR KOREA SAI</a>	
<a href="#">KAISERSLAUTERN IND CTR SARS:</a>	

Cbsperki: [Logout](#)

[Query INVEN002](#)

Svc	Data Source	NSN, LSN, HDC or PN
-----	-------------	---------------------

USA	ATAV	4720011560549
USA	ATAV	4720011560549
USA	ATAV	4720011560549
USA	ATAV	4720011560549
USA	ATAV	4720011560549

**Drill down and sideway - Microsoft Internet Explorer provided by ...**

File Edit View Favorites Tools Help  
 Back Forward Stop Refresh Home Search Favorites

[\[add FB5209 to hot list\]](#)

DODAAC  
FB5209

Close

Unit Name and Address		UIC	Svc Nr
FB5209 374 AW LGSDR CML PHN 81 3755 8974 BLDG 950 MCGUIRE ST YOKOTA AB FUSSA CITY TOKYO JAPN 197		FB5209	F

[Comments](#) [Help](#) 10.INVEN002

Save Data ? Customize

Qty	Due Stor	Out RIC	DODAAC	Unit Name and Address
-----	----------	---------	--------	-----------------------

10	AXB			SR WOUX CONSOL SUPPLY ACT D
50	AGU			HEADQUARTERS XVIII AIRBORNE
	A7Y			SU W4QV STK REC ACCT APGSA :
	WET			SR USA MAT SPT CTR KOREA SAI
	WQF			KAISERSLAUTERN IND CTR SARSS

**USA**  
**F**

\*\*\*\*  
sum

USAF	SBSS	4720011560549	HOSE, NONMETALLIC FT	42				FB5209	FB5209 374 AW LGSDR
USAF	SBSS	4720011560549	HOSE, NONMETALLIC FT	50				FB6201	FB6201 104 FW LGS BARI
USAF	SBSS	4720011560549	HOSE, NONMETALLIC FT	34				FB6331	FB6331 145 AW LGTT
USAF	SBSS	4720011560549	HOSE, NONMETALLIC FT	45				FB6352	ANG ASST USPFO FOR PROP LGS
USAF	SBSS	4720011560549	HOSE, NONMETALLIC FT	25				FB6355	ANG ASST USPFO FOR PROP LGS
USAF	SBSS	4720011560549	HOSE, NONMETALLIC FT	14				FB6432	FB6432 149 FW/LGTT

\*\*\*\*  
sum

File Edit View Favorites Tools Help

Back Forward Stop Refresh Home Search Favorites History Mail Print Edit

Address [https://excalibur.hq.pacom.mil/c4i/JTAVWB\\_10.frames?usr=Cbsperki&q=INVEN002&querytable=:/queries/q.INVEN002&f=1.a&rn0=38&rn1=1&rn2=200&nr=38&loop=custom](https://excalibur.hq.pacom.mil/c4i/JTAVWB_10.frames?usr=Cbsperki&q=INVEN002&querytable=:/queries/q.INVEN002&f=1.a&rn0=38&rn1=1&rn2=200&nr=38&loop=custom) Go

Links [JTAV-Excalibur](#) [JTAV-Tripoli](#) [DBDD-Excalibur](#) [DBDD-Tripoli](#) [DBDD-DS9](#) [GTN Home](#) [RF ITV](#) [AEPS Entry Point](#) [USAREUR ITV HOME PAGE](#)

Cbsperki: [Logout](#) [MainQuery Page](#) **UNCLASSIFIED** [Comments](#) [Help](#) 10.INVEN002

[Query INVEN002](#) Rows  to  of 38 >  ?

Svc	Data Source	NSN, LSN, HDC or PN					DODAAC Unit Name and Address
****	sum						
<a href="#">USAF</a>	<a href="#">SBSS</a>	<a href="#">4720011560549</a>					<a href="#">FB5209</a>   <a href="#">FB5209</a> 374 AW LGS DR
<a href="#">USAF</a>	<a href="#">SBSS</a>	<a href="#">4720011560549</a>					<a href="#">FB6201</a>   <a href="#">FB6201</a> 104 FW LGS BARI
<a href="#">USAF</a>	<a href="#">SBSS</a>	<a href="#">4720011560549</a>					<a href="#">FB6331</a>   <a href="#">FB6331</a> 145 AW LGTT
<a href="#">USAF</a>	<a href="#">SBSS</a>	<a href="#">4720011560549</a>					<a href="#">FB6352</a>   <a href="#">ANG ASST USPFO FOR PROP LGS</a>
<a href="#">USAF</a>	<a href="#">SBSS</a>	<a href="#">4720011560549</a>					<a href="#">FB6355</a>   <a href="#">ANG ASST USPFO FOR PROP LGS</a>
<a href="#">USAF</a>	<a href="#">SBSS</a>	<a href="#">4720011560549</a>					<a href="#">FB6432</a>   <a href="#">FB6432</a> 149 FW/LGTT
****	sum						
<a href="#">USMC</a>	<a href="#">SASSY</a>	<a href="#">4720011560549</a>	<a href="#">HOSE_NONMETALLIC</a>   <a href="#">FT</a>	14	20	0	<a href="#">MC3</a>   <a href="#">MMC100</a>   <a href="#">OFFICER IN CHARGE SMU</a>
<a href="#">USMC</a>	<a href="#">SASSY</a>	<a href="#">4720011560549</a>	<a href="#">HOSE_NONMETALLIC</a>   <a href="#">FT</a>	12	0	0	<a href="#">MR3</a>   <a href="#">MMK100</a>   <a href="#">GENERAL ACCOUNT SMU HI</a>
				26	20	0	

**USM  
C**

Drill down and sideways - Microsoft Internet Explorer provided by ...

File Edit View Favorites Tools Help

Back Forward Stop Refresh Home Search Favorites

[add MC3 to hot list]

Close

RIC	OR Name	OR Address
MC3	SASSY MANAGEMENT UNIT 0000	1ST SUPPLY BATTALION 00000, 1ST FORCE SERVICE SUPPORT GROUP 00000, CAMP PENDLETON CA 92055-5703 00



File Edit View Favorites Tools Help

Back Forward Stop Refresh Home Search Favorites History Mail Print Edit

Address [https://excalibur.hq.pacom.mil/c4i/JTAVWB\\_10.frames?usr=Cbsperki&q=INVEN002&f=1.a&n0=38&n1=1&n2=200&n=38&loop=custom](https://excalibur.hq.pacom.mil/c4i/JTAVWB_10.frames?usr=Cbsperki&q=INVEN002&f=1.a&n0=38&n1=1&n2=200&n=38&loop=custom) Go

Links JTAV-Excalibur JTAV-Tripoli DBDD-Excalibur DBDD-Tripoli

Cbsperki: [Logout](#) [MainQuery Page](#) [Comments](#) [Help](#) 10.INVEN002

**Save Data**

Query [INVEN002](#) Rows  to  of 38 >  ?

<a href="#">Svc</a>	<a href="#">Data Source</a>	<a href="#">NSN, LSN, HDC or PN</a>	<a href="#">Nomenclature</a>	<a href="#">UI</a>	<a href="#">Qty On Hand</a>	<a href="#">Qty Due In</a>	<a href="#">Qty Due Out</a>	<a href="#">Stor RIC</a>	<a href="#">DODAAC</a>	<a href="#">Unit Name and Address</a>
USA	ATAV-NG	4720011560549	HOSE, NONMETALLIC	FT		25	25	A19	W11M94	SREUSPFO WHS ACTV CT ARNG ST
USA	ATAV-NG	4720011560549	HOSE, NONMETALLIC	FT		1	1	A36	W23R7E	XRAUSPFO FOR MARYLAND
USA	ATAV-NG	4720011560549	HOSE, NONMETALLIC	FT		15	15	A54	W24L9M	SREW7NU USPFO ACTIVITY OH AI
USA	ATAV	4720011560549	HOSE, NONMETALLIC	FT	41			WF2	W34TVH	SR 801 CS BN B CO LT MAINT :
USA	ATAV	4720011560549	HOSE, NONMETALLIC	FT	122			WGT	W4546F	SR C CO 27 MAIN SPT BN SARS:
USA	ATAV-RES	4720011560549	HOSE, NONMETALLIC	FT		3	3	W40	W55XGJ	SR ARCENT TRNG SCTY KU DSU :
USA	ATAV-RES	4720011560549	HOSE, NONMETALLIC	FT		2	2	WMC	W806BY	SR 238 CS CO MAINT CO GS SAI
USA	ATAV-NG	4720011560549	HOSE, NONMETALLIC	FT		50	50	WDA	W808GP	SRV540 CS BN CO C LT MA
USA	ATAV-NG	4720011560549	HOSE, NONMETALLIC	FT		10	10	WCW	W80HGJ	SRVHHC 42ND CS SPT CMD SRA
USA	ATAV	4720011560549	HOSE, NONMETALLIC	FT		9	9	W66	W80KG6	XR CO F 58TH AVN ASL
USA	ATAV-NG	4720011560549	HOSE, NONMETALLIC	FT		75	75	A39	W80X71	SREUSPFO FOR MI SRA
USA	ATAV-NG	4720011560549	HOSE, NONMETALLIC	FT		10	10	WLF	W81DP2	SRE278 CS SQ TRP B MAIN
USA	ATAV-NG	4720011560549	HOSE, NONMETALLIC	FT		25	25	A21	W81J8X	SREUSPFO FOR DE STOCK RECORI
USA	ATAV-NG	4720011560549	HOSE, NONMETALLIC	FT		12	12	A62	W81JND	SREUSPFO FOR TN SRA
USA	ATAV-NG	4720011560549	HOSE, NONMETALLIC	FT		30	30	A31	W81K4N	SREUSPFO FOR KS SARSS 1
USA	ATAV	4720011560549	HOSE, NONMETALLIC	FT	239			WXH	W90A0D	SR W3VA CO B FSB SARSS 1
USA	ATAV	4720011560549	HOSE, NONMETALLIC	FT	17			WQR	W44BM9	SR 123 CS BN CO D
USA	ATAV	4720011560549	HOSE, NONMETALLIC	FT	20			ACN	W44F81	SR 596 CS CO MAINT SSA
USA	ATAV	4720011560549	HOSE, NONMETALLIC	FT		31	31	AER	W44FV9	SR W4EC SUPPLY SUPPORT DIV :
USA	ATAV	4720011560549	HOSE, NONMETALLIC	FT		25	25	WQW	W44GE4	SR 701 CS BN CO D
USA	ATAV	4720011560549	HOSE, NONMETALLIC	FT	11			WQ3	W44GEY	SR W1KN FSB SUP CO FWD
USA	ATAV	4720011560549	HOSE, NONMETALLIC	FT	4			AC1		SR WOC3 USA MAT SPT CEN KORI
USA	ATAV	4720011560549	HOSE, NONMETALLIC	FT		1	1	AW1		CONSOLIDATED PROPERTY ACCOU
USA	ATAV	4720011560549	HOSE, NONMETALLIC	FT		10	10	AXB		SR WOUX CONSOL SUPPLY ACT D
USA	ATAV	4720011560549	HOSE, NONMETALLIC	FT		50	50	AGU		HEADQUARTERS XVIII AIRBORNE
USA	ATAV	4720011560549	HOSE, NONMETALLIC	FT				A7Y		SII W40V STK REC ACCT APGSA

File Edit View Insert Format Tools Data Go Favorites Help

Back Forward Stop Refresh Home Search Favorites History Tools Mail Print Edit

Address [https://excalibur.hq.pacom.mil/c4i/JTAVWB\\_10.download](https://excalibur.hq.pacom.mil/c4i/JTAVWB_10.download) Go

Links [JTAV-Excalibur](#) [JTAV-Tripoli](#) [DBDD-Excalibur](#) [DBDD-Tripoli](#) [DBDD-DS9](#) [GTN Home](#) [RF ITV](#) [AEPS Entry Point](#) [USAREUR ITV HOME PAGE](#)

	A	B	C	D	E	F	G	H	I	J	K	L	M	N
1	[2002/03/08 00:40 Z]													
2	Source: ATAV, DISMS, DRMS, FIMARS, JMARS, MCSCS, SAMMS, SASSY, SBSS, SCCR, USAF and UADPS II.													
3	Services: Army - Air Force - Marine Corps - Navy - DLA -													
4	NSN/LSN/NDC/PN: 4720011560549													
5	Rows:													
6														
7														
8														
9	Svc	Data Sour	NSN, LSN, NDC or PN	Nomenclat	UI	Qty On Hand	Qty Due In	Qty Due O	Qty RO	Shelf Life (Lot Numbe	Pack Date	Expiration	Own/ Pur	
10														
11														
12	DLA	SAMMS	4720011560549.00	HOSE,NO	FT	282								A
13	DLA	SAMMS	4720011560549.00	HOSE,NO	FT	462								A
14						-----	-----	-----						
15						744								
16														
17														
18	****					-----	-----	-----						
19	sum					744								
20														
21														
22	USA	ATAV-NG	4720011560549.00	HOSE,NO	FT		25	25						A
23	USA	ATAV-NG	4720011560549.00	HOSE,NO	FT		1	1						A
24	USA	ATAV-NG	4720011560549.00	HOSE,NO	FT		15	15						A
25	USA	ATAV	4720011560549.00	HOSE,NO	FT	41			41					A
26	USA	ATAV	4720011560549.00	HOSE,NO	FT	122			161					A
27	USA	ATAV-RES	4720011560549.00	HOSE,NO	FT		3	3						A
28	USA	ATAV-RES	4720011560549.00	HOSE,NO	FT		2	2						A
29	USA	ATAV-NG	4720011560549.00	HOSE,NO	FT		50	50						A
30	USA	ATAV-NG	4720011560549.00	HOSE,NO	FT		10	10						A
31	USA	ATAV	4720011560549.00	HOSE,NO	FT		9	9						A

**Excel Spreadsheet**

Train1: [Logout](#)

[Main Page](#)

**UNCLASSIFIED**

[Comments](#)

[Help](#)

4.a

## Inventory Queries

(Use [Ad Hoc Queries](#) if no predefined query fits your needs)

**Ad Hoc Query  
- Make your  
own!**

Argument	Sch/Rdy	Queries	These queries provide:	Details
FSC		<a href="#">INVEN005</a>	Inventory status by Federal Supply Class (FSC).	<a href="#">Show</a>
NSN/LSN/NDC/PN		<a href="#">INVEN001</a>	A rollup of inventory status by Service/Agency and condition code for a specific National Stock Number (NSN), National Item Identification Code (NIIN), Local Stock Number (LSN), National Drug Code (NDC) or Part Number (PN).	<a href="#">Show</a>
		<a href="#">INVEN002</a>	An inventory status by Service/Agency, storage location, and condition code for NSN, NIIN, LSN, NDC or PN.	<a href="#">Show</a>
NSN/LSN/NDC/PN & DODAAC		<a href="#">INVEN003</a>	Retail inventory status by condition code for a specific DODAAC.	<a href="#">Show</a>
Nomenclature		<a href="#">INVEN007</a>	Inventory management data and status for a specific nomenclature; used when specific stock number is not available	<a href="#">Show</a>



## Ad hoc Query Items: Inventory

### Data Pool: All Inventory

Check the arguments you want to supply (a columns) and the items you want to see (i columns).

i	Item Name	a	i	Item Name	a	i	Item Name
<input checked="" type="checkbox"/>	<a href="#">Bench Stock Authorization</a>	<input checked="" type="checkbox"/>	<input checked="" type="checkbox"/>	<a href="#">NSN/LSN/NDC/PN</a>	<input type="checkbox"/>	<input type="checkbox"/>	<a href="#">Report Code</a>
<input type="checkbox"/>	<a href="#">Condition Code</a>	<input type="checkbox"/>	<input type="checkbox"/>	<a href="#">Ownership/Purpose Code</a>	<input type="checkbox"/>	<input type="checkbox"/>	<a href="#">Requisition Objective Quantity</a>
<input type="checkbox"/>	<a href="#">Data Source</a>	<input type="checkbox"/>	<input type="checkbox"/>	<a href="#">Pack Date</a>	<input type="checkbox"/>	<input type="checkbox"/>	<a href="#">Routing Identifier Code</a>
<input type="checkbox"/>	<a href="#">Data Time Stamp</a>	<input type="checkbox"/>	<input checked="" type="checkbox"/>	<a href="#">Primary Operating Stock Quantity</a>	<input type="checkbox"/>	<input type="checkbox"/>	<a href="#">Service Name</a>
<input type="checkbox"/>	<a href="#">Date Last Changed</a>	<input type="checkbox"/>	<input type="checkbox"/>	<a href="#">Project Code</a>	<input type="checkbox"/>	<input type="checkbox"/>	<a href="#">Shelf Life Code</a>
<input type="checkbox"/>	<a href="#">DODAAC</a>	<input type="checkbox"/>	<input type="checkbox"/>	<a href="#">Quantity Due In</a>	<input type="checkbox"/>	<input type="checkbox"/>	<a href="#">Supply Point Quantity</a>
<input type="checkbox"/>	<a href="#">Expiration Date</a>	<input type="checkbox"/>	<input type="checkbox"/>	<a href="#">Quantity Due Out</a>	<input type="checkbox"/>	<input type="checkbox"/>	<a href="#">Unit Identification Code</a>
<input type="checkbox"/>	<a href="#">Lot Number</a>	<input type="checkbox"/>	<input type="checkbox"/>	<a href="#">Quantity On Hand</a>	<input type="checkbox"/>	<input type="checkbox"/>	<a href="#">Unit Name and Address</a>
<input type="checkbox"/>	<a href="#">NIN/NDC/PN</a>	<input type="checkbox"/>	<input type="checkbox"/>	<a href="#">Quantity Safety Level</a>	<input type="checkbox"/>	<input type="checkbox"/>	<a href="#">Unit of Issue</a>
<input checked="" type="checkbox"/>	<a href="#">Nomenclature</a>	<input type="checkbox"/>	<input checked="" type="checkbox"/>	<a href="#">Readiness Spares Quantity</a>	<input type="checkbox"/>	<input type="checkbox"/>	

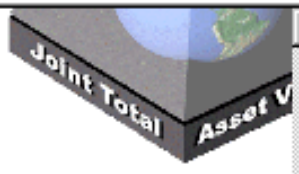
Train1: [Logout](#)

**UNCLASSIFIED**

[Comments](#)

[Help](#)

1



# JTAV

## Joint Total Asset Visibility

Your last logout/login was 24 minutes ago from 199.211.150.33

You are communicating with

You may initiate a query from one of these Functional Areas:

- |                                    |  |                                   |
|------------------------------------|--|-----------------------------------|
| <a href="#">Inventory</a>          | <a href="#">War Reserves</a>                 | <a href="#">Maintenance (TBD)</a> |
| <a href="#">Transportation</a>     | <a href="#">Unit Equipment</a>               | <a href="#">Medical</a>           |
| <a href="#">Ground (DTRACS)</a>    | <a href="#">Bulk Fuel</a>                    | <a href="#">Utility</a>           |
| <a href="#">RF Tag ID (ITV)</a>    | <a href="#">Munitions</a>                    | <a href="#">Reports</a>           |
| <a href="#">Requisition Status</a> | Batch Query Status: <a href="#">ENHANCED</a> | <a href="#">TRANSPORTATION</a>    |
|                                    | None   |                                   |

You may also initiate a query from the [List of Entry Arguments](#).

### Resources

- [Release Notes](#)  
(1.0.0.9\_p10)
- [Password Change](#)
- [Address Change](#)
- [Database Schema Browser](#)
- [Comments Review](#)
- [Hotlist Editor](#)
- [User Guide](#)
- [Data Feeds](#)
- [Commercial Carrier Web Sites](#)
- [Related Web Sites](#)

**Transportation:  
Stored Server  
Data**



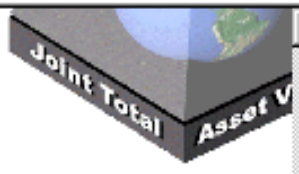
Train1: [Logout](#)

**UNCLASSIFIED**

[Comments](#)

[Help](#)

1



# JTAV

## Joint Total Asset Visibility

Your last logout/login was 24 minutes ago from 199.211.150.33

You are communicating with

You may initiate a query from one of these Functional Areas:

- |                                    |  |                                   |
|------------------------------------|--|-----------------------------------|
| <a href="#">Inventory</a>          | <a href="#">War Reserves</a>                 | <a href="#">Maintenance (TBD)</a> |
| <a href="#">Transportation</a>     | <a href="#">Unit Equipment</a>               | <a href="#">Medical</a>           |
| <a href="#">Ground (DTRACS)</a>    | <a href="#">Bulk Fuel</a>                    | <a href="#">Utility</a>           |
| <a href="#">RF Tag ID (ITV)</a>    | <a href="#">Munitions</a>                    | <a href="#">Reports</a>           |
| <a href="#">Requisition Status</a> | Batch Query Status: <a href="#">ENHANCED</a> | <a href="#">TRANSPORTATION</a>    |
|                                    | None   |                                   |

You may also initiate a query from the [List of Entry Arguments](#).

- Resources**
- [Release Notes](#)  
(1.0.0.9\_p10)
  - [Password Change](#)
  - [Address Change](#)
  - [Database Schema Browser](#)
  - [Comments Review](#)
  - [Hotlist Editor](#)
  - [User Guide](#)
  - [Data Feeds](#)
  - [Commercial Carrier Web Sites](#)
  - [Related Web Sites](#)

**Enhanced  
Transportation -  
Direct Reach-back to**



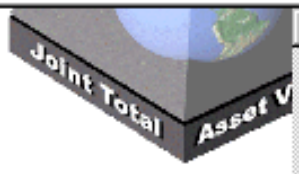
Train1: [Logout](#)

**UNCLASSIFIED**

[Comments](#)

[Help](#)

1



# JTAV

## Joint Total Asset Visibility

Your last logout/login was 24 minutes ago from 199.211.150.33

You are communicating with

### You may initiate a query from one of these Functional Areas:

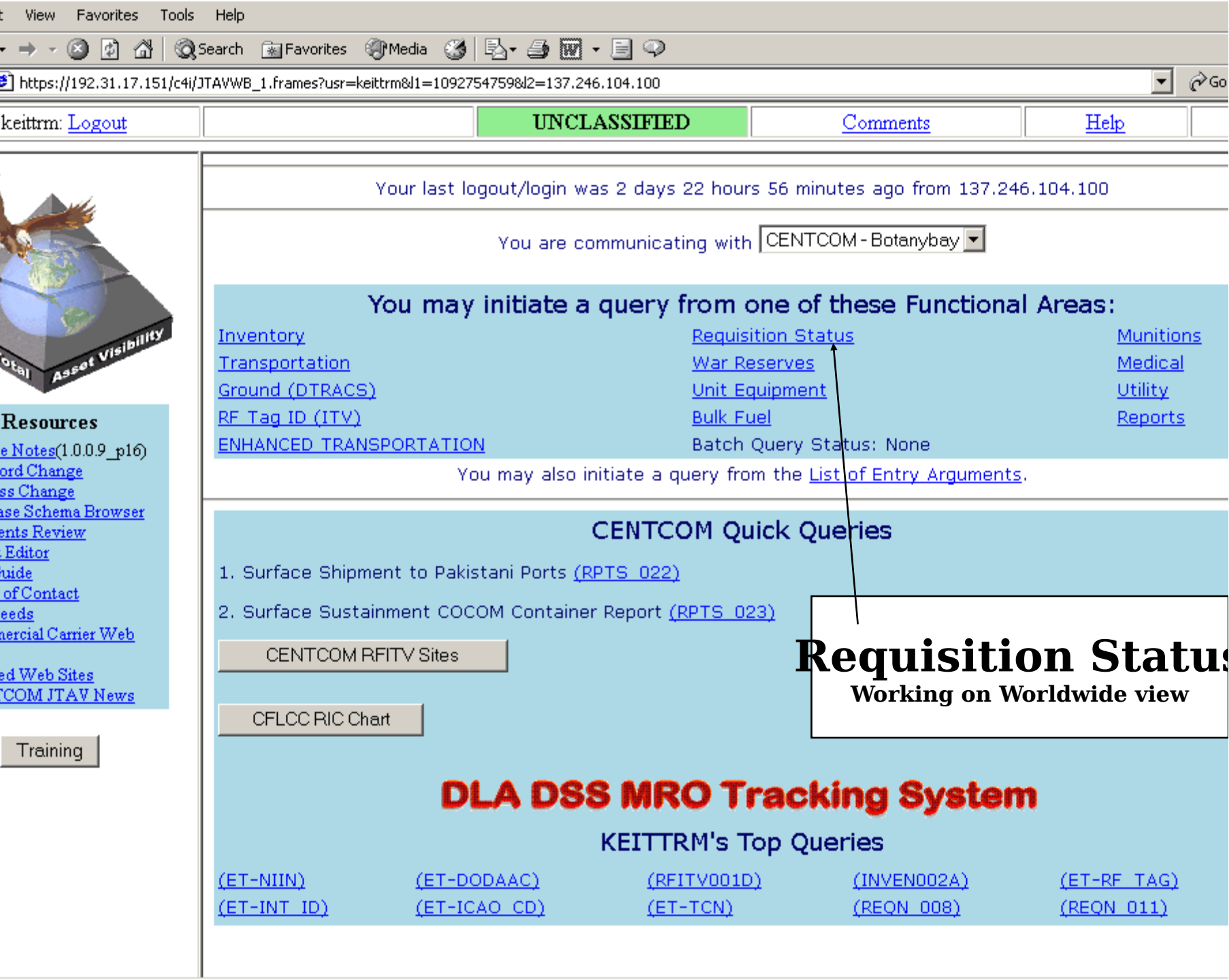
- |                                    |  |                                   |
|------------------------------------|--|-----------------------------------|
| <a href="#">Inventory</a>          | <a href="#">War Reserves</a>                 | <a href="#">Maintenance (TBD)</a> |
| <a href="#">Transportation</a>     | <a href="#">Unit Equipment</a>               | <a href="#">Medical</a>           |
| <a href="#">Ground (DTRACS)</a>    | <a href="#">Bulk Fuel</a>                    | <a href="#">Utility</a>           |
| <a href="#">RF Tag ID (ITV)</a>    | <a href="#">Munitions</a>                    | <a href="#">Reports</a>           |
| <a href="#">Requisition Status</a> | Batch Query Status: <a href="#">ENHANCED</a> | <a href="#">TRANSPORTATION</a>    |
|                                    | None   |                                   |

You may also initiate a query from the [List of Entry Arguments](#).

- Resources**
- [Release Notes](#)  
(1.0.0.9\_p10)
  - [Password Change](#)
  - [Address Change](#)
  - [Database Schema Browser](#)
  - [Comments Review](#)
  - [Hotlist Editor](#)
  - [User Guide](#)
  - [Data Feeds](#)
  - [Commercial Carrier Web Sites](#)
  - [Related Web Sites](#)

**Radio Frequency Tags**





Your last logout/login was 2 days 22 hours 56 minutes ago from 137.246.104.100

You are communicating with

You may initiate a query from one of these Functional Areas:

- |   |                                    |                           |
|---|------------------------------------|---------------------------|
| <a href="#">Inventory</a>               | <a href="#">Requisition Status</a> | <a href="#">Munitions</a> |
| <a href="#">Transportation</a>          | <a href="#">War Reserves</a>       | <a href="#">Medical</a>   |
| <a href="#">Ground (DTRACS)</a>         | <a href="#">Unit Equipment</a>     | <a href="#">Utility</a>   |
| <a href="#">RF Tag ID (ITV)</a>         | <a href="#">Bulk Fuel</a>          | <a href="#">Reports</a>   |
| <a href="#">ENHANCED TRANSPORTATION</a> | Batch Query Status: None           |                           |

You may also initiate a query from the [List of Entry Arguments](#).

CENTCOM Quick Queries

1. Surface Shipment to Pakistani Ports ([RPTS\\_022](#))
2. Surface Sustainment COCOM Container Report ([RPTS\\_023](#))

**Requisition Status**  
Working on Worldwide view

**DLA DSS MRO Tracking System**

KEITTRM's Top Queries

- |                             |                              |                             |                             |                             |
|-----------------------------|------------------------------|-----------------------------|-----------------------------|-----------------------------|
| <a href="#">(ET-NIIN)</a>   | <a href="#">(ET-DODAAC)</a>  | <a href="#">(RFITV001D)</a> | <a href="#">(INVEN002A)</a> | <a href="#">(ET-RF_TAG)</a> |
| <a href="#">(ET-INT_ID)</a> | <a href="#">(ET-ICAO_CD)</a> | <a href="#">(ET-TCN)</a>    | <a href="#">(REQN_008)</a>  | <a href="#">(REQN_011)</a>  |

Resources

- [e Notes\(1.0.0.9\\_p16\)](#)
- [Word Change](#)
- [Class Change](#)
- [Base Schema Browser](#)
- [Events Review](#)
- [Editor](#)
- [Guide](#)
- [of Contact](#)
- [Needs](#)
- [Commercial Carrier Web](#)
- [ed Web Sites](#)
- [COM JTAV News](#)



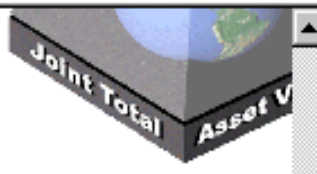
Train1: [Logout](#)

**UNCLASSIFIED**

[Comments](#)

[Help](#)

1



# JTAV

## Joint Total Asset Visibility

Your last logout/login was 24 minutes ago from 199.211.150.33

You are communicating with

You may initiate a query from one of these Functional Areas:

- [Inventory](#)
- [War Reserves](#)
- [Maintenance \(TBD\)](#)
- [Transportation](#)
- [Unit Equipment](#)
- [Medical](#)
- [Ground \(BTRACS\)](#)
- [Bulk Fuel](#)
- [Utility](#)
- [RF Tag ID \(ITV\)](#)
- [Munitions](#)
- [Reports](#)

Query Status: [ENHANCED](#)  
[TRANSPORTATION](#)

query from the [List of Entry Arguments](#).

**APS 1 Army CONUS**  
**APS 2 Army Europe**  
**APS 3 Army Pacific**  
**Afloat**  
**APS 4 Army Pacific**

**MPS 1 Mediterranean**  
**Afloat**  
**MPS 2 Pacific Afloat**



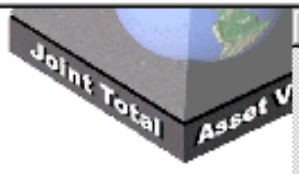
Train1: [Logout](#)

**UNCLASSIFIED**

[Comments](#)

[Help](#)

1



# JTAV

## Joint Total Asset Visibility

Your last logout/login was 24 minutes ago from 199.211.150.33

You are communicating with

You may initiate a query from one of these Functional Areas:

- |                                    |  |                                   |
|------------------------------------|--|-----------------------------------|
| <a href="#">Inventory</a>          | <a href="#">War Reserves</a>                 | <a href="#">Maintenance (TBD)</a> |
| <a href="#">Transportation</a>     | <a href="#">Unit Equipment</a>               | <a href="#">Medical</a>           |
| <a href="#">Ground (DTRACS)</a>    | <a href="#">Bulk Fuel</a>                    | <a href="#">Utility</a>           |
| <a href="#">RF Tag ID (ITV)</a>    | <a href="#">Munitions</a>                    | <a href="#">Reports</a>           |
| <a href="#">Requisition Status</a> | Batch Query Status: <a href="#">ENHANCED</a> | <a href="#">TRANSPORTATION</a>    |
|                                    | None   |                                   |

You may also initiate a query from the [List of Entry Arguments](#).

- Resources**
- [Release Notes](#)  
(1.0.0.9\_p10)
  - [Password Change](#)
  - [Address Change](#)
  - [Database Schema Browser](#)
  - [Comments Review](#)
  - [Hotlist Editor](#)
  - [User Guide](#)
  - [Data Feeds](#)
  - [Commercial Carrier Web Sites](#)
  - [Related Web Sites](#)

**Unit Equipment - USAF, USA, USMC & USN (EOD**



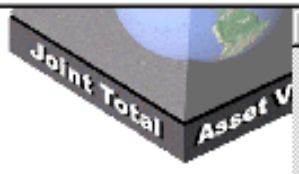
Train1: [Logout](#)

**UNCLASSIFIED**

[Comments](#)

[Help](#)

1



# JTAV

## Joint Total Asset Visibility

Your last logout/login was 24 minutes ago from 199.211.150.33

You are communicating with

You may initiate a query from one of these Functional Areas:

- |                                    |  |                                   |
|------------------------------------|--|-----------------------------------|
| <a href="#">Inventory</a>          | <a href="#">War Reserves</a>                 | <a href="#">Maintenance (TBD)</a> |
| <a href="#">Transportation</a>     | <a href="#">Unit Equipment</a>               | <a href="#">Medical</a>           |
| <a href="#">Ground (DTRACS)</a>    | <a href="#">Bulk Fuel</a>                    | <a href="#">Utility</a>           |
| <a href="#">RF Tag ID (ITV)</a>    | <a href="#">Munitions</a>                    | <a href="#">Reports</a>           |
| <a href="#">Requisition Status</a> | Batch Query Status: <a href="#">ENHANCED</a> | <a href="#">TRANSPORTATION</a>    |
|                                    | None   |                                   |

You may also initiate a query from the [List of Entry Arguments](#).

### Resources

- [Release Notes](#)  
(1.0.0.9\_p10)
- [Password Change](#)
- [Address Change](#)
- [Database Schema Browser](#)
- [Comments Review](#)
- [Hotlist Editor](#)
- [User Guide](#)
- [Data Feeds](#)
- [Commercial Carrier Web Sites](#)
- [Related Web Sites](#)

Training

**Bulk Fuel - Worldwide**



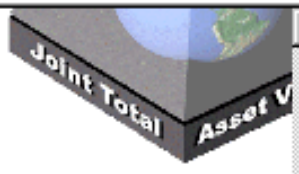
Train1: [Logout](#)

**UNCLASSIFIED**

[Comments](#)

[Help](#)

1



# JTAV

## Joint Total Asset Visibility

Your last logout/login was 24 minutes ago from 199.211.150.33

You are communicating with

You may initiate a query from one of these Functional Areas:

- |                                    |  |                                   |
|------------------------------------|--|-----------------------------------|
| <a href="#">Inventory</a>          | <a href="#">War Reserves</a>                 | <a href="#">Maintenance (TBD)</a> |
| <a href="#">Transportation</a>     | <a href="#">Unit Equipment</a>               | <a href="#">Medical</a>           |
| <a href="#">Ground (DTRACS)</a>    | <a href="#">Bulk Fuel</a>                    | <a href="#">Utility</a>           |
| <a href="#">RF Tag ID (ITV)</a>    | <a href="#">Munitions</a>                    | <a href="#">Reports</a>           |
| <a href="#">Requisition Status</a> | Batch Query Status: <a href="#">ENHANCED</a> | <a href="#">TRANSPORTATION</a>    |
|                                    | None   |                                   |

You may also initiate a query from the [List of Entry Arguments](#).

- Resources**
- [Release Notes](#)  
(1.0.0.9\_p10)
  - [Password Change](#)
  - [Address Change](#)
  - [Database Schema Browser](#)
  - [Comments Review](#)
  - [Hotlist Editor](#)
  - [User Guide](#)
  - [Data Feeds](#)
  - [Commercial Carrier Web Sites](#)
  - [Related Web Sites](#)

**Ammo (except USN and USMC Air -**





# JTAV

*Joint Total Asset Visibility*

You are communicating with PACOM - Excalibur

You may initiate a query from one of these Functional Areas:

- |                                    |                                |   |
|------------------------------------|--------------------------------|---|
| <a href="#">Inventory</a>          | <a href="#">War Reserves</a>   | <a href="#">Maintenance (TBD)</a>       |
| <a href="#">Transportation</a>     | <a href="#">Unit Equipment</a> | <a href="#">Medical</a>                 |
| <a href="#">Ground (DTRACS)</a>    | <a href="#">Bulk Fuel</a>      | <a href="#">Utility</a>                 |
| <a href="#">RF Tag ID (ITV)</a>    | <a href="#">Munitions</a>      | <a href="#">Reports</a>                 |
| <a href="#">Requisition Status</a> | Batch Query Status: None       | <a href="#">ENHANCED TRANSPORTATION</a> |

You may also initiate a query from the [List of Entry Arguments](#).

**View Query Results**

- Worldwide M... Search via GTN Reachback ([ET- \(INVEN004\)](#))
- Requisition Doc Status ([REQN 001](#))

PACOM Surface Cargo Rpt-07/23/03

- Resources**
- [Release Notes \(1.0.0.9\\_p11\)](#)
  - [Password Change](#)
  - [Address Change](#)
  - [Database Schema](#)
  - [Browser](#)
  - [Comments Review](#)
  - [Hotlist Editor](#)
  - [User Guide](#)
  - [Data Feeds](#)
  - [Commercial Carrier](#)
  - [Web Sites](#)
  - [Related Web Sites](#)

Training

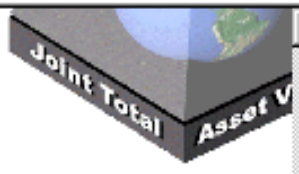
Train1: [Logout](#)

**UNCLASSIFIED**

[Comments](#)

[Help](#)

1



# JTAV

## Joint Total Asset Visibility

Your last logout/login was 24 minutes ago from 199.211.150.33

You are communicating with

### You may initiate a query from one of these Functional Areas:

- |                                    |  |   |
|------------------------------------|--|---|
| <a href="#">Inventory</a>          | <a href="#">War Reserves</a>             | <a href="#">Maintenance (TBD)</a>       |
| <a href="#">Transportation</a>     | <a href="#">Unit Equipment</a>           | <a href="#">Medical</a>                 |
| <a href="#">Ground (DTRACS)</a>    | <a href="#">Bulk Fuel</a>                | <a href="#">Utility</a>                 |
| <a href="#">RF Tag ID (ITV)</a>    | <a href="#">Munitions</a>                | <a href="#">Reports</a>                 |
| <a href="#">Requisition Status</a> | <a href="#">Batch Query Status: None</a> | <a href="#">ENHANCED TRANSPORTATION</a> |

You may also initiate a query from the [List of Entry Arguments](#).

- #### Resources
- [Release Notes](#)  
(1.0.0.9\_p10)
  - [Password Change](#)
  - [Address Change](#)
  - [Database Schema Browser](#)
  - [Comments Review](#)
  - [Hotlist Editor](#)
  - [User Guide](#)
  - [Data Feeds](#)
  - [Commercial Carrier Web Sites](#)
  - [Related Web Sites](#)

Training

**Medical Supplies -**



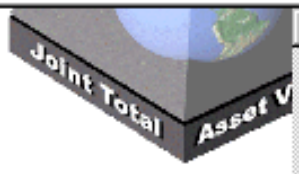
Train1: [Logout](#)

**UNCLASSIFIED**

[Comments](#)

[Help](#)

1



# JTAV

## Joint Total Asset Visibility

Your last logout/login was 24 minutes ago from 199.211.150.33

You are communicating with

### You may initiate a query from one of these Functional Areas:

- |                                    |                                |   |
|------------------------------------|--------------------------------|---|
| <a href="#">Inventory</a>          | <a href="#">War Reserves</a>   | <a href="#">Maintenance (TBD)</a>       |
| <a href="#">Transportation</a>     | <a href="#">Unit Equipment</a> | <a href="#">Medical</a>                 |
| <a href="#">Ground (DTRACS)</a>    | <a href="#">Bulk Fuel</a>      | <a href="#">Utility</a>                 |
| <a href="#">RF Tag ID (ITV)</a>    | <a href="#">Munitions</a>      | <a href="#">Reports</a>                 |
| <a href="#">Requisition Status</a> | Batch Query Status: None       | <a href="#">ENHANCED TRANSPORTATION</a> |

You may also initiate a query from the [List of Entry Arguments](#).

### Quick Queries

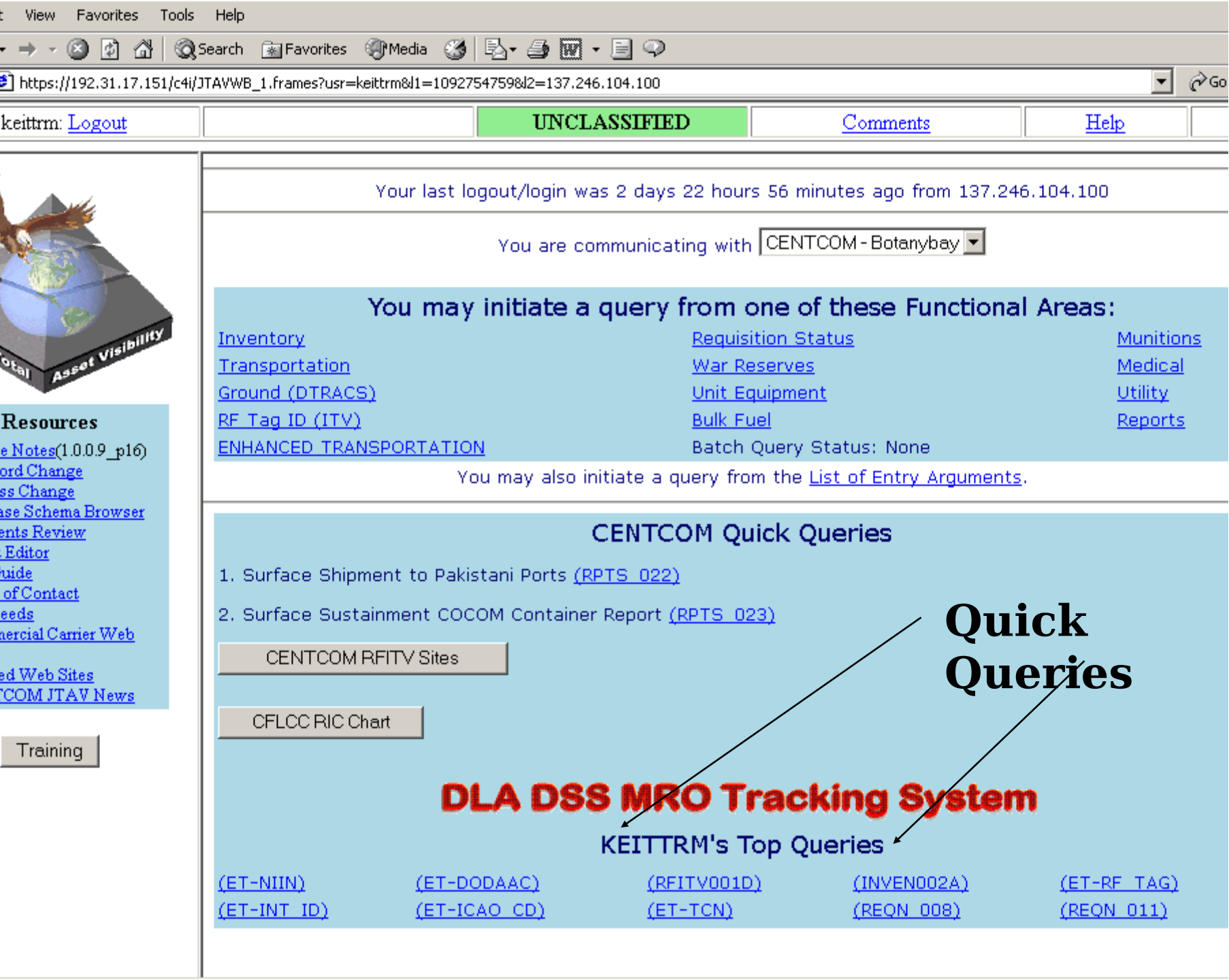
#### Resources

- [Release Notes](#)  
(1.0.0.9\_p10)
- [Password Change](#)
- [Address Change](#)
- [Database Schema Browser](#)
- [Comments Review](#)
- [Hotlist Editor](#)
- [User Guide](#)
- [Data Feeds](#)
- [Commercial Carrier Web Sites](#)
- [Related Web Sites](#)

Training

**Utility**





Your last logout/login was 2 days 22 hours 56 minutes ago from 137.246.104.100

You are communicating with

### You may initiate a query from one of these Functional Areas:

- |   |                                    |                           |
|---|------------------------------------|---------------------------|
| <a href="#">Inventory</a>               | <a href="#">Requisition Status</a> | <a href="#">Munitions</a> |
| <a href="#">Transportation</a>          | <a href="#">War Reserves</a>       | <a href="#">Medical</a>   |
| <a href="#">Ground (DTRACS)</a>         | <a href="#">Unit Equipment</a>     | <a href="#">Utility</a>   |
| <a href="#">RF Tag ID (ITV)</a>         | <a href="#">Bulk Fuel</a>          | <a href="#">Reports</a>   |
| <a href="#">ENHANCED TRANSPORTATION</a> | Batch Query Status: None           |                           |

You may also initiate a query from the [List of Entry Arguments](#).

### CENTCOM Quick Queries

1. Surface Shipment to Pakistani Ports ([RPTS\\_022](#))
2. Surface Sustainment COCOM Container Report ([RPTS\\_023](#))

# Quick Queries

## DLA DSS MRO Tracking System

### KEITTRM's Top Queries

- |                             |                              |                             |                             |                             |
|-----------------------------|------------------------------|-----------------------------|-----------------------------|-----------------------------|
| <a href="#">(ET-NIIN)</a>   | <a href="#">(ET-DODAAC)</a>  | <a href="#">(RFITV001D)</a> | <a href="#">(INVEN002A)</a> | <a href="#">(ET-RF_TAG)</a> |
| <a href="#">(ET-INT_ID)</a> | <a href="#">(ET-ICAO_CD)</a> | <a href="#">(ET-TCN)</a>    | <a href="#">(REQN_008)</a>  | <a href="#">(REQN_011)</a>  |



- Resources**
- [e Notes\(1.0.0.9\\_p16\)](#)
  - [Record Change](#)
  - [Class Change](#)
  - [Base Schema Browser](#)
  - [Events Review](#)
  - [Editor](#)
  - [Guide](#)
  - [of Contact](#)
  - [Needs](#)
  - [Commercial Carrier Web](#)
  - [ed Web Sites](#)
  - [COM JTAV News](#)

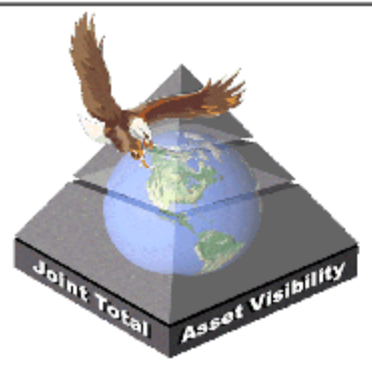


keittrm: [Logout](#)

**UNCLASSIFIED**

[Comments](#)

[Help](#)



**Resources**

- 1. [Release Notes\(1.0.0.9\\_p16\)](#)
- 2. [Password Change](#)
- 3. [Address Change](#)
- 4. [Database Schema Browser](#)
- 5. [Comments Review](#)
- 6. [Hotlist Editor](#)
- 7. [User Guide](#)
- 8. [Points of Contact](#)
- 9. [Data Feeds](#)
- 10. [Commercial Carrier Web Sites](#)
- 11. [Related Web Sites](#)
- 12. [CENTCOM JTAV News](#)

[Training](#)

Your last logout/login was 2 days 22 hours 56 minutes ago from 137.246.104.100

You are communicating with

**You may initiate a query from one of these Functional Areas:**

- |   |                                    |                         |
|---|------------------------------------|-------------------------|
| <a href="#">Inventory</a>               | <a href="#">Requisition Status</a> | <a href="#">Mu...</a>   |
| <a href="#">Transportation</a>          | <a href="#">War Reserves</a>       | <a href="#">Me...</a>   |
| <a href="#">Ground (DTRACS)</a>         | <a href="#">Unit Equipment</a>     | <a href="#">Util...</a> |
| <a href="#">RF Tag ID (ITV)</a>         | <a href="#">Bulk Fuel</a>          | <a href="#">Rep...</a>  |
| <a href="#">ENHANCED TRANSPORTATION</a> | Batch Query Status: None           |                         |

You may also initiate a query from the [List of Entry Arguments](#).

**CENTCOM Quick Queries**

- 1. Surface Shipment to Pakistani Ports ([RPTS\\_022](#))
- 2. Surface Sustainment COCOM Container Report ([RPTS\\_023](#))

[CENTCOM RFITV Sites](#)

[CFLCC RIC Chart](#)

**CENTCOM Reports**

**DLA DSS MRO Tracking System**

**KEITTRM's Top Queries**

- |                             |                              |                             |                             |                             |
|-----------------------------|------------------------------|-----------------------------|-----------------------------|-----------------------------|
| <a href="#">(ET-NIIN)</a>   | <a href="#">(ET-DODAAC)</a>  | <a href="#">(RFITV001D)</a> | <a href="#">(INVEN002A)</a> | <a href="#">(ET-RF T...</a> |
| <a href="#">(ET-INT_ID)</a> | <a href="#">(ET-ICAO_CD)</a> | <a href="#">(ET-TCN)</a>    | <a href="#">(REQN_008)</a>  | <a href="#">(REQN_01...</a> |



# JTAV Support Office CENTCOM/JFCOM

**Peter Galgay, SAIC**

**JTAV CENTCOM Site Manager**

**Com: (813) 827-1850**

**DSN: (312) 651-1850**

**galgaype@centcom.mil**

**Regina M. Keitt, SAIC**

**JTAV JFCOM Site Manager**

**Com: (757) 836-8185**

**DSN: (312) 836-8185**

**regina.keitt@jfc.com.mil**

